

Contact Us

Li Ka Shing Foundation "Heart of Gold" National Hospice Service Program Office

Shantou University Medical College, 22 Xinling Road, Shantou, Guangdong
515041
0754 - 88900255, 88900300
0754 - 88900239
hospicechina@stu.edu.cn
http://www.hospice.com.cn



HOSPICE



2001-2016

Hope Beyond Life

It was my pleasure to provide hospice service for him, a man like an angel. I'm happy his pain was alleviated and quality of life was enhanced by hospice care in his last days. I'm proud of our hospice care-givers.

The heart is only as big as love. A compass can be used for drawing a circle since the feet keep moving but the center (heart) is unchanged. To have a loving heart is a real joy. Thanks for hospice care.

We have gone through village after village, crossed road after road and witnessed numerous "good-byes". We bring our love and turn them into warm sunshine.

Because of you, my life has no regrets; because of you, I can realize my daughter's wish.

After seeking medical services for several years, I was turned away like the plague by relatives and friends. However, hospice providers not only treat us free of charge, but also visit, encourage and comfort us. This is more precious and heart-warming than gold.

In our eyes, the best comfort is to have the patient's life end in peace, rather than with pain, regret or remorse.

Hospice care not only calms patients' emotion, but also eases and comforts their families. Through this, our souls are also cleansed.

When I see the anticipation in patients' eyes, I really wish to gain more knowledge, to comfort their souls, to alleviate their psychological burden, to reduce their regret and to help them rest in peace.

We reminisce happy memories with them, encourage the family members to communicate with each other, to accompany and support. Little by little, we help patients retrieve their dignity, and the courage and strength to live on.

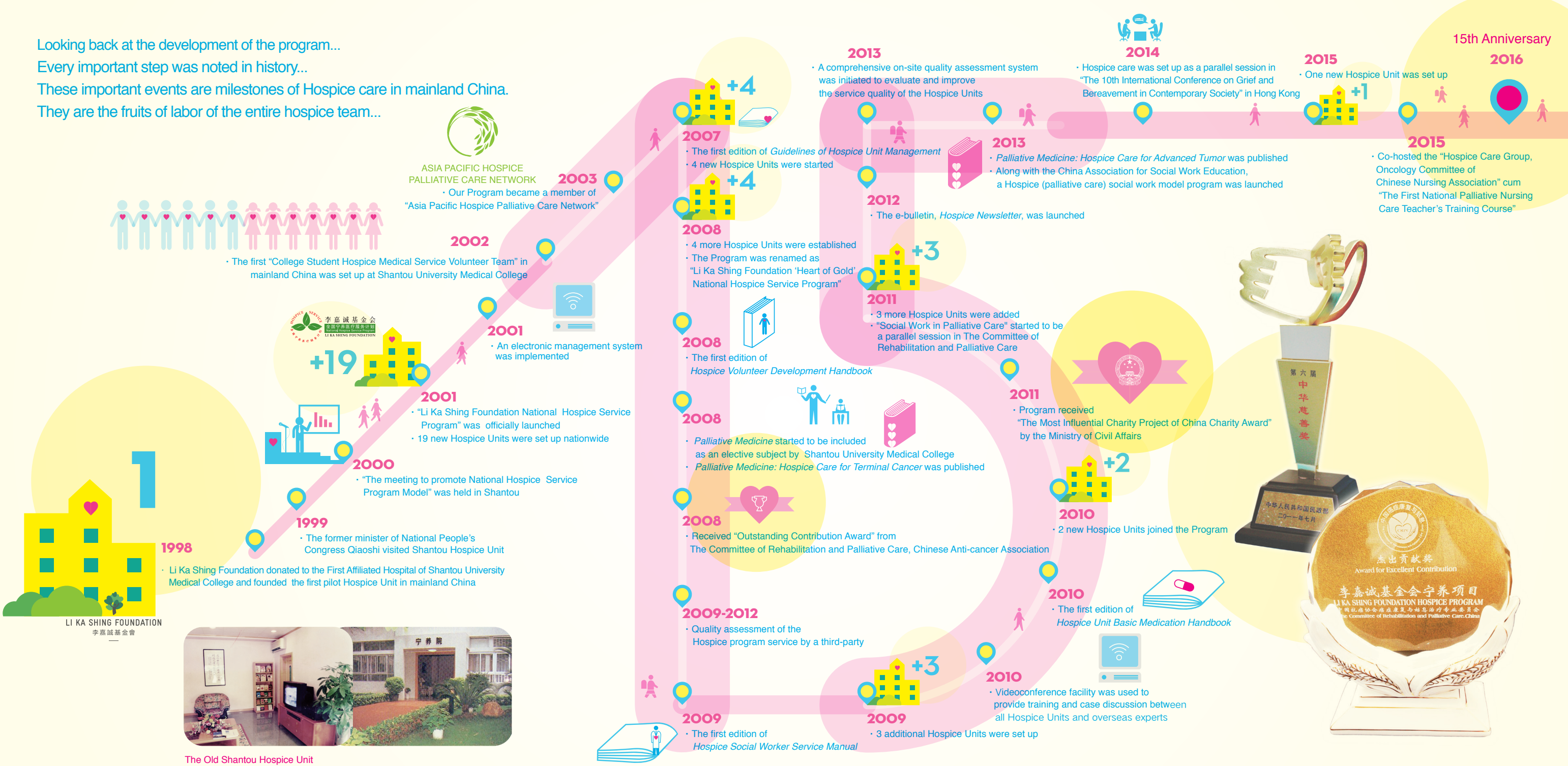
Families' trust on us makes us feel highly responsible. While we help them, our souls are cleansed. Patients and their families help us as well.

I was "sentenced" to live only for another six months. But, I think I should live courageously, do good things, be a volunteer and to repay the society.

Hospice care was set up as a parallel session in "The 10th International Conference on Grief and Bereavement in Contemporary Society" in Hong Kong

One new Hospice Unit was set up

Looking back at the development of the program...
Every important step was noted in history...
These important events are milestones of Hospice care in mainland China.
They are the fruits of labor of the entire hospice team...



The Old Shantou Hospice Unit

About Hospice Program

Li Ka Shing Foundation (the Foundation) donated to the First Affiliated Hospital of Shantou University Medical College and established the **first Hospice Unit in mainland China** in 1998. The "Heart of Gold" National Hospice Service Program was launched in 2001, offering impoverished terminally ill patients **free home-based** pain relief medications, nursing care, bereavement support and psychological counseling amongst its services.

As one of the Foundation's long-term projects to date, the Program manages more than 30 Hospice Units across 26 provinces, autonomous regions and municipalities in mainland China. It is a nationwide holistic medical charity program, which provides not only **pain relief medications**, but also **psychological, bereavement and social support**, benefiting over **160,000** patients through more than two million service sessions (home visits **391,541**, out-patient visits **1,211,809**, phone calls **633,326**).

The Foundation has contributed over RMB **580 million** to the Program and donates more than RMB **50 million** annually.

The Program was extended to Hong Kong in 2007, with hospice day care centers now established in 10 public hospitals.

The "Heart of Gold" Hospice Service Program includes over **40** Hospice Units/Centers in mainland China and Hong Kong and over **190,000** cancer patients have benefitted. The Foundation has contributed RMB **700 million** to the Program.



Medical Ethics Education

- From 2003, Hospice Units were used as part of medical ethics education for students to promote and enhance humanistic care. Over ten thousand medical students have joined the volunteer services, each enrolling for one year or more.
- Over ten thousand medical students from 12 medical schools/universities where the Hospice Units are based have taken "Palliative Medicine" as an elective subject since 2008.

Hospice Social Worker

- To encourage Social Work departments/colleges to participate in hospice-related services and to promote the development of medical social work.
- To develop the conceptual paradigm of medical social work, to promote social work as part of a healthcare facility and to put forward the guidelines for medical social work through implementation of the "Hospice (palliative care) Social Service Program" model.



Hospice Volunteers



List of Hospice Units

1998	Shantou	Hospice Unit, The First Affiliated Hospital of Shantou University Medical College
2001	Shanghai	Hospice Unit, Affiliated Xinhua Hospital of Shanghai Jiaotong University School of Medicine
2001	Zhanjiang	Hospice Unit, Affiliated Hospital of Guangdong Medical University
2001	Shenzhen	Hospice Unit, Shenzhen People's Hospital
2001	Shaoguan	Hospice Unit, Yuebei People's Hospital
2001	Chaozhou	Hospice Unit, Chaozhou Central Hospital
2001	Dalian	Hospice Unit, The First Affiliated Hospital of Dalian Medical University
2001	Lanzhou	Hospice Unit, First Hospital of Lanzhou University
2001	Fuzhou	Hospice Unit, Fujian Provincial Hospital
2001	Nanchang	Hospice Unit, The First Affiliated Hospital of Nanchang University
2001	Urumqi	Hospice Unit, Affiliated Tumor Hospital of Xinjiang Medical University
2001	Harbin	Hospice Unit, Affiliated Tumor Hospital of Harbin Medical University
2001	Chongqing	Hospice Unit, The First Affiliated Hospital of Chongqing Medical University
2001	Wuhan	Hospice Unit, Zhongnan Hospital of Wuhan University
2007	Xian	Hospice Unit, Shanxi Provincial People's Hospital
2007	Chengdu	Hospice Unit, West China Fourth Hospital of Sichuan University
2007	Haikou	Hospice Unit, Hainan Provincial People's Hospital
2007	Dehong	Hospice Unit, Dehong People's Hospital
2008	Xinxiang	Hospice Unit, The Third Affiliated Hospital of Xinxiang Medical College
2008	Taiyuan	Hospice Unit, Shanxi Provincial Tumor Hospital
2008	Changsha	Hospice Unit, Hunan Provincial Tumor Hospital
2008	Changchun	Hospice Unit, The First Hospital of Jilin University Hospice
2009	Xining	Hospice Unit, Affiliated Hospital of Qinghai University
2009	Yinchuan	Hospice Unit, Ningxia People's Hospital
2009	Baotou	Hospice Unit, Baotou Central Hospital
2010	Guiyang	Hospice Unit, Guizhou Cancer Hospital
2010	Fuyang	Hospice Unit, Fuyang People's Hospital
2011	Liaocheng	Hospice Unit, Liaocheng People's Hospital
2011	Tangshan	Hospice Unit, Tangshan People's Hospital
2011	Shijiazhuang	Hospice Unit, The Fourth Hospital of Hebei Medical University
2015	Liuzhou	Hospice Unit, Liuzhou Worker's Hospital

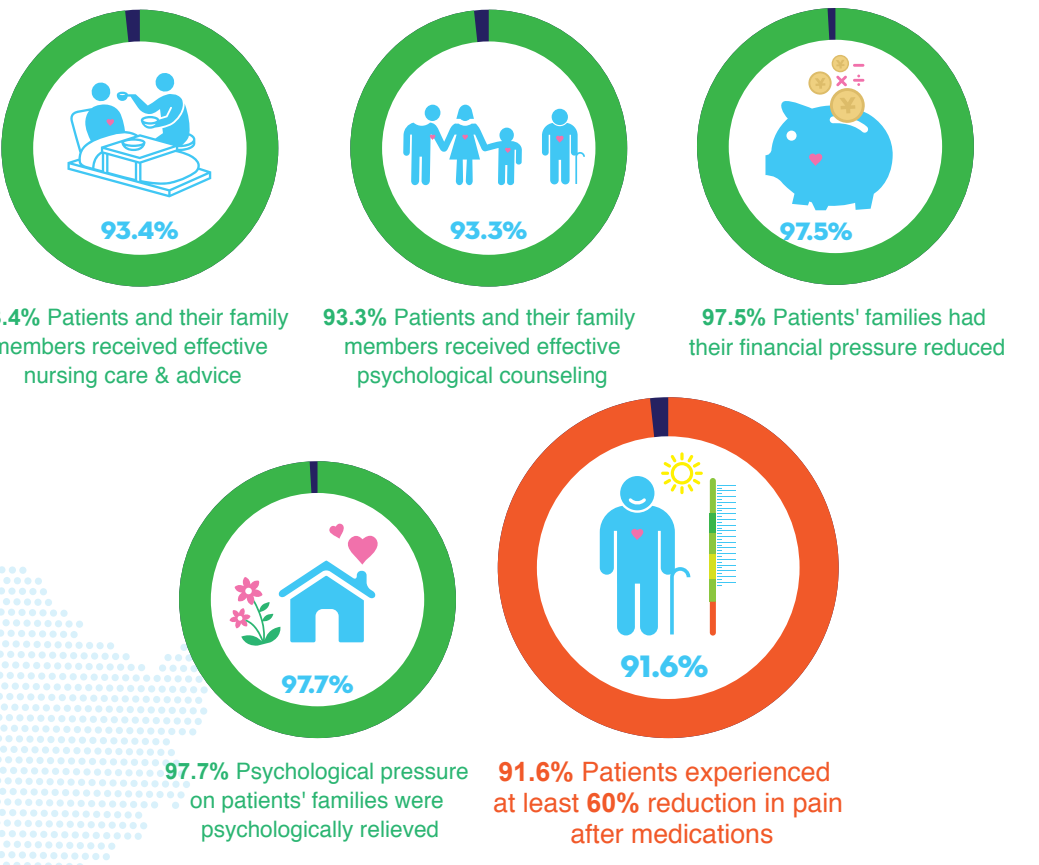
Hospice Care Model

The first home-based nationwide holistic medical model offers pain relief medications and nursing care, psychological and bereavement support as well as social support. Through the multi-disciplinary hospice team, quality of life of terminally ill patients is improved and they live meaningfully with dignity during the last part of their lives. The scope of service offered includes home visits, pain management, out-patient services, follow-up communication, psychological counseling and addressing psychosocial issues patients' and their families may experience, advisory services for families on practical aspects of care, bereavement support, as well as provision of social resources and volunteer services. Each Hospice Unit is staffed with full-time personnel comprising two physicians, two nurses, a social worker, a clerk and a driver.



Quality of Life

Patients' quality of life has been effectively improved following hospice service according to random sampling phone surveys of more than ten thousand impoverished terminal cancer patients and their main care-givers.



The Way Forward

- Promote hospice philosophy
 - Regular community activities are advocated to increase public awareness and understanding of the concept and philosophy of hospice.
 - Effective use of social media to promote the concept of hospice care.
 - Organization of various activities through professional bodies and associations, selection of hospice staff to actively participate in annual meetings and academic endeavors, to raise the profile of hospice in the professional field and in society in general.
- Implementation of Palliative Medicine as a sub-specialty
 - Encourage medical colleges/universities to establish a specific course in Palliative Medicine.
 - Cultivate professional development, social care and support of terminal cancer patients.

